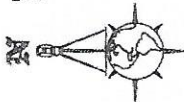


KENWOOD GLEN I OF ST. ANDREWS EAST AT THE PLANTATION

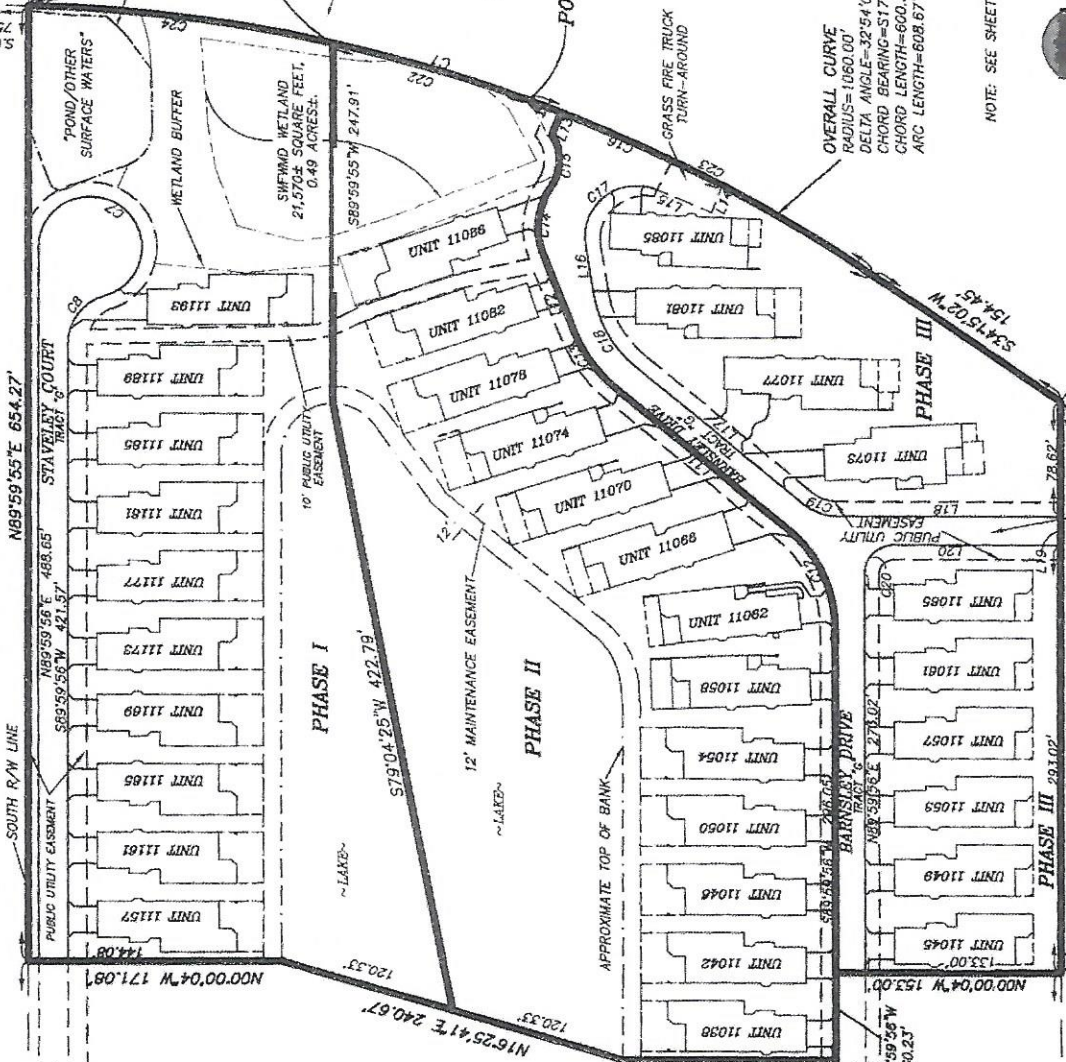
CONDOMINIUM BOOK **PAGE 6**
 SHEET **3** OF **6**
 EXHIBIT "A" TO THE DECLARATION OF CONDOMINIUM IN
 CIVIL CASE NO. 03-10000-0000
 OF THE PUBLIC RECORDS OF
 SARASOTA COUNTY, FLORIDA

A CONDOMINIUM LYING IN A PORTION OF SECTION 24, TOWNSHIP 39
 SOUTH, RANGE 19 EAST
 SARASOTA COUNTY, FLORIDA

POINT OF COMMENCEMENT
 NORTHWEST CORNER OF SECTION 24, TOWNSHIP 39
 SOUTH, RANGE 19 EAST,
 SARASOTA COUNTY, FLORIDA
 (OFFICIAL RECORD BOOK 1461, PAGE 903)



CENTER ROAD
 (150' PUBLIC R/W 54' PAVED IMPAVED ROAD)



POINT OF BEGINNING
 KENWOOD GLEN I AND PHASE I
 APPROXIMATE TOP OF BANK

POINT OF BEGINNING
 PHASE II

POINT OF BEGINNING
 PHASE III

WETLAND AREA I PER I.C.M.B. I,
 PARCELS 9-1 PUBLIC RECORDS
 SARASOTA COUNTY, FLORIDA

NOW OR FORMERLY LANDS OF
 "VENICE AREA MIDDLE SCHOOL"
 (OFFICIAL RECORD BOOK 1461, PAGE 903)

OVERALL CURVE
 RADIUS=1060.00'
 DELTA ANGLE=32°54'00"
 CHORD BEARING=S17°48'02"W
 CHORD LENGTH=600.34'
 ARC LENGTH=608.67'

NOTE: SEE SHEET 2 FOR LINE AND CURVE TABLES

B.S.T. 1987

STRAYER
 SURVEYING & MAPPING, INC.

742 Sharnock Parkway
 Venice, FL 33593
 (941) 495-8488
 Fax (941) 497-6186
www.strayersurveying.com

PARCEL I
 CAMBRIDGE MEWS OF ST. ANDREWS EAST AT THE PLANTATION
 CONDO BOOK 38, PAGE 28

KENWOOD GLEN II OF ST. ANDREWS EAST AT
 THE PLANTATION, A CONDOMINIUM
 (PROPOSED)